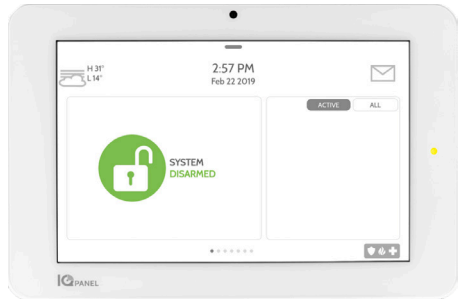




Quick Reference Guide

Qolsys



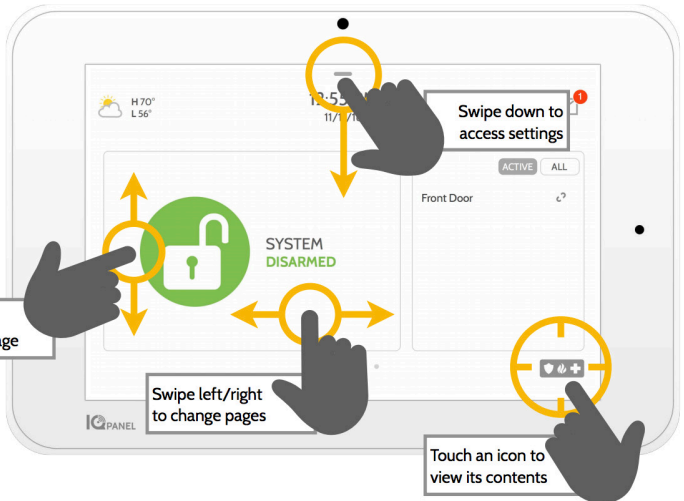
Basic Functions

Navigating from page to page can allow you to access information on each page using finger touches, swipes and scrolling.

Touchscreen Functions

Navigation

Move from page to page and access information on each page using finger touches, swipes, and scrolling.



Arming the System

The Security screen can be pressed to access arming options.

To Arm

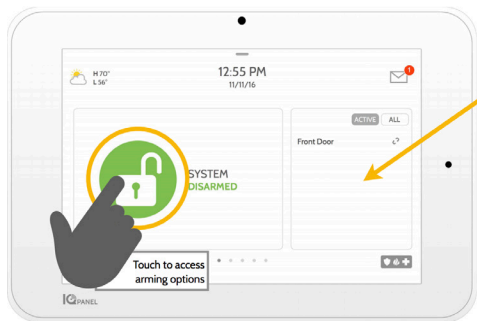
- Arm Away** Press the *arm away* button and enter your 4 digit user code. This is used for times when no one is home and all perimeter and interior zones are protected.
- Arm Stay** Press the *arm stay* button and enter your 4 digit user code. This is for times when the house is occupied but only protects perimeter zones (doors).

Additional Arming Options

When on the arming options screen, you can press the *arrow right* button to view additional options.

Bypass Touch the circle next to a sensor to bypass it during the arming sequence

Entry Delay The panel will give you time to disarm once a “delay door” has been opened. Turn this off with a switch

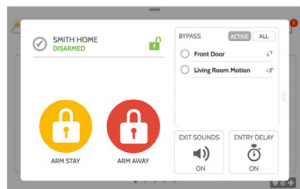
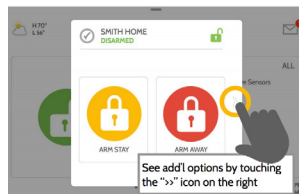


Sensor List

Open or active sensors appear in a scrollable list on the right. Touch the icons in the upper right corner to switch your view to either “Active” or “All” sensors.

Sensor status:

- Open
- Closed
- Active
- Idle
- Unreachable
- Tampered
- Synchronizing



Arming Options

Quickly choose from “stay” or “away”



Arming Stay

Arms doors and windows only



Arming Away

Arms doors, windows and motions



Additional Options

View additional arming options by touching the “>>” icon on the right side.

Additional Arming Options

Select these options before choosing your arming type



Bypass

Touch the circle next to a sensor to bypass it during the arming sequence



Exit Sounds

The panel beeps as the timer counts down. Silence these beeps before you choose the arming type.

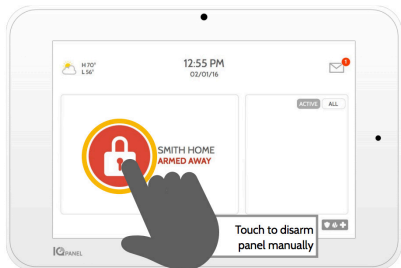


Entry Delay

The panel will give you time to disarm once a “delay door” has been opened. Turn this off with a touch.

Disarming the System

Touch the *Disarm* button, enter your 4-digit user code. The system beeps and announces “Disarmed”.



Disarming your System

When your system is armed, there are multiple ways to disarm:

Disarming Manually



To manually disarm your panel, touch the icon in the center of the screen. You will be prompted to enter a valid code. Failure to enter a valid code with the time required will trigger the alarm.



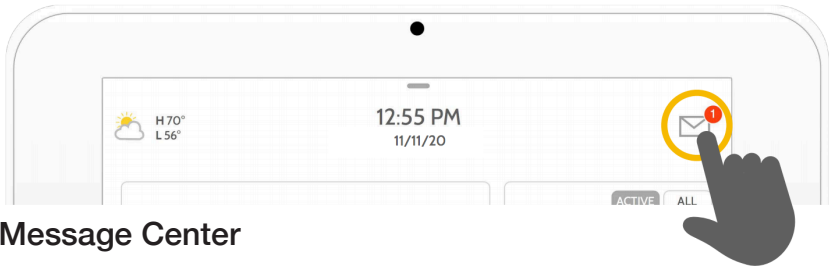
When someone manually disarms the panel the built in camera will take a photo and save it on the camera page along with the date, time, and name of the user.

Bypassing Sensors or Zones

Before arming the system, press *Zones* on the Security menu. A list of your system’s zones appears. Faulted or (open) zones are shown in red or orange. Use the up and down arrows to scroll through the list of zones.

Select the zone to be bypassed and press the *Bypass* button at the bottom of the screen. A keypad will appear. Enter your 4 digit user code. The zone list reappears with the Bypass icon shown for the affected zone.

Message Center & Tutorials



Message Center

Access your message center by touching the icon in the upper right corner. Once it's open you'll see three sections: Contact, Video Tutorials, Alerts/Alarms, and Messages. (Note: this icon may appear different than shown, depending on settings)



Video Tutorials

Watch videos to help you understand your system and service better. To watch a video, touch a thumbnail. Video will begin playing automatically.

Video controls appear on screen, to exit, touch the **“back”** button.